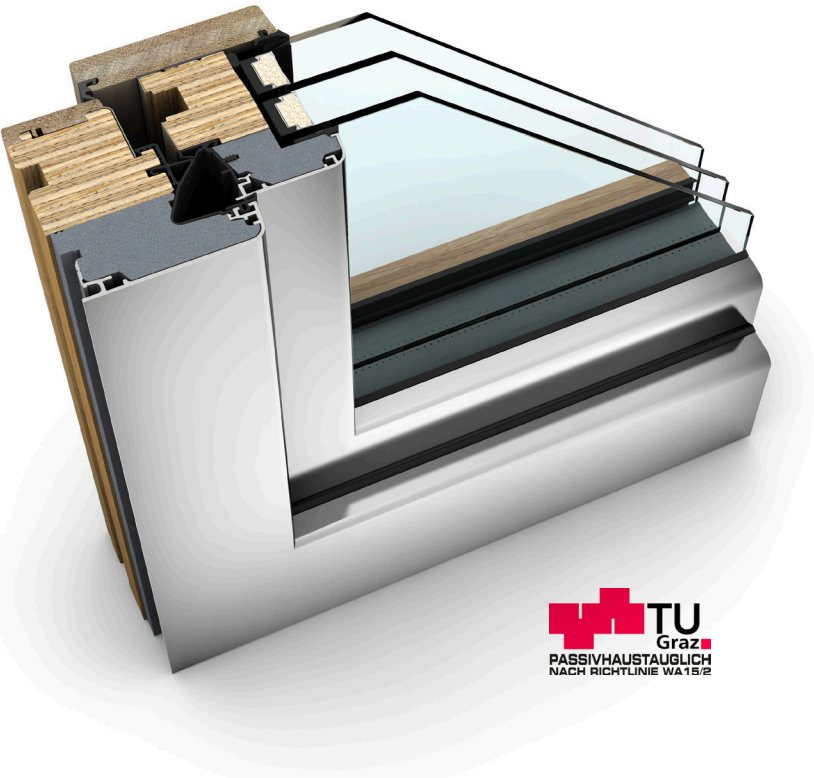







# HF 410 TIMBER/ALUMINIUM WINDOW



**TU**  
Graz  
PASSIVHAUSTAUGLICH  
NACH RICHTLINIE WA15/2

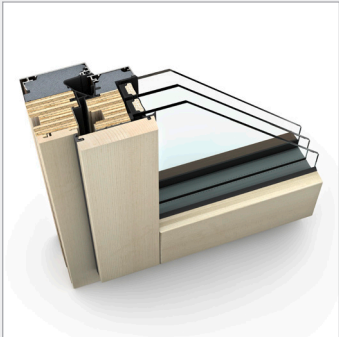
## PROPERTIES

	<b>Thermal insulation</b> $U_w$ as low as 0.64 W/(m <sup>2</sup> K)
	<b>Sound reduction</b> up to 45 dB
	<b>Security</b> RC1N, RC2
	<b>Locking</b> concealed
	<b>Construction depth</b> 85 mm

**I-tec Glazing**  
**I-tec Core**

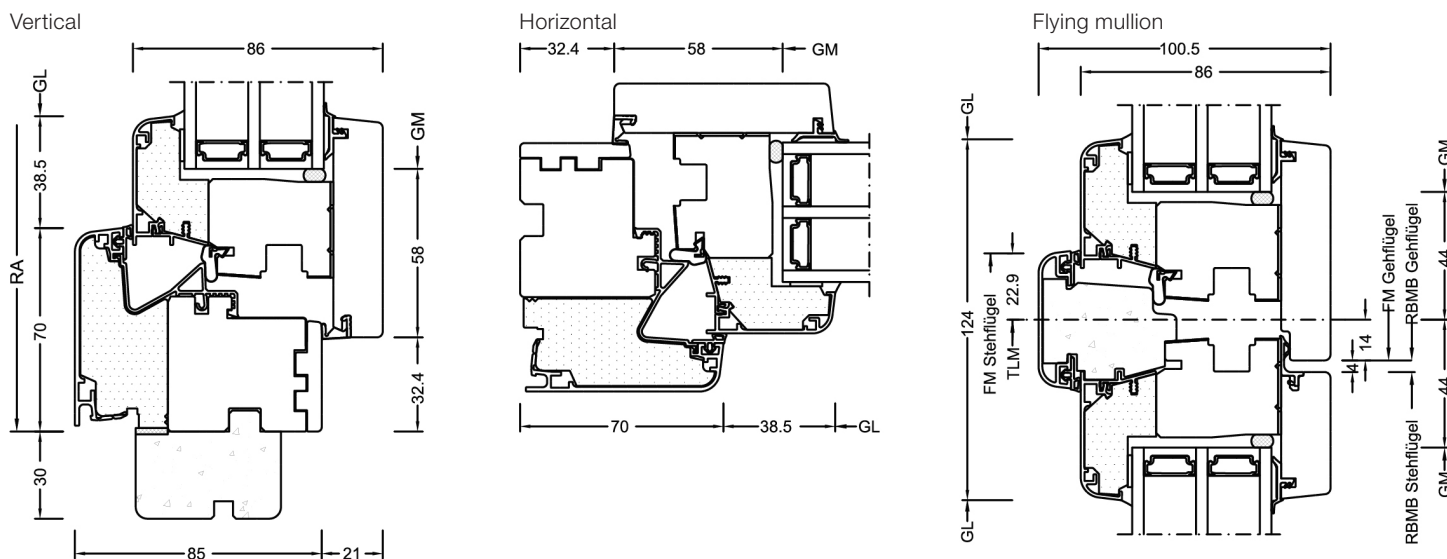


Experience HF 410 interactively now with Augmented Reality



**HF 410**  
Sophisticated colour combinations of furniture, windows and floors bring a unique flair to your rooms. The wide colour and timber range of the new timber/aluminium window HF 410 offers you countless possibilities for the harmonious design of your living space. In addition to many types of timber, we now also offer you a high-quality laminated timber composite encased with solid spruce. Particularly resource-saving and available at an attractive price/performance ratio.

Sections



Values

Glass buildup	GC	Spacer	Coating	Ug	g	Uf	Psi	Uw	Thermal certif.	Rw	C	Ctr	Sound certif.
4b/18Ar/4/18Ar/b4	3N2	Iso	ECLAZ	0.5	60%	0.86	0.033	0.70	YES	35	-2	-6	YES
		Alu	ECLAZ	0.5	60%	0.86	0.079	0.80	YES				
6b/18Ar/4/16Ar/b4	33U	Iso	ECLAZ	0.6	59%	0.86	0.033	0.78*	YES	39	-2	-6	YES
		Alu	ECLAZ	0.6	59%	0.86	0.079	0.89*	YES				
44b.2(VSG-S)/ 15Ar/4/12Ar/ b44.2(VSG-S)	3FH	Iso	ECLAZ	0.7	55%	0.86	0.033	0.88*	YES	45	-2	-6	YES
		Alu	ECLAZ	0.7	55%	0.86	0.079	0.99*	YES				
4b/16Ar/4/15Ar/b44.2(VSG-S)	34N	Iso	ECLAZ	0.6	60%	0.86	0.033	0.78*	YES	42	-3	-7	YES
		Alu	ECLAZ	0.6	60%	0.86	0.079	0.89*	YES				

Values for home pure with test certificate

ECLAZ®

Daylight is crucial for our human organism, our wellbeing and our health. Therefore, Internorm windows are equipped with premium glass coating ECLAZ® as standard. The blue components of the light spectrum are transported through the glass more and ensure up to 10 % more daylight. Compared to conventional market glazing, ECLAZ® is offering:

**More aesthetics** – colour-neutral outside view, a combination of function and aesthetics

**More light** – up to 10% more daylight – better for health and wellbeing – a significant advantage especially in the dark winter months\*

**Visual comfort** – for a brilliant view to the outside

**Room comfort** – makes living areas even lighter and friendlier

**Energy efficiency** – excellent insulation of interior thus reducing heating costs - increased energy efficiency in building - up to 11 % less CO<sub>2</sub> emissions

\* In direct comparison to same glass buildups.