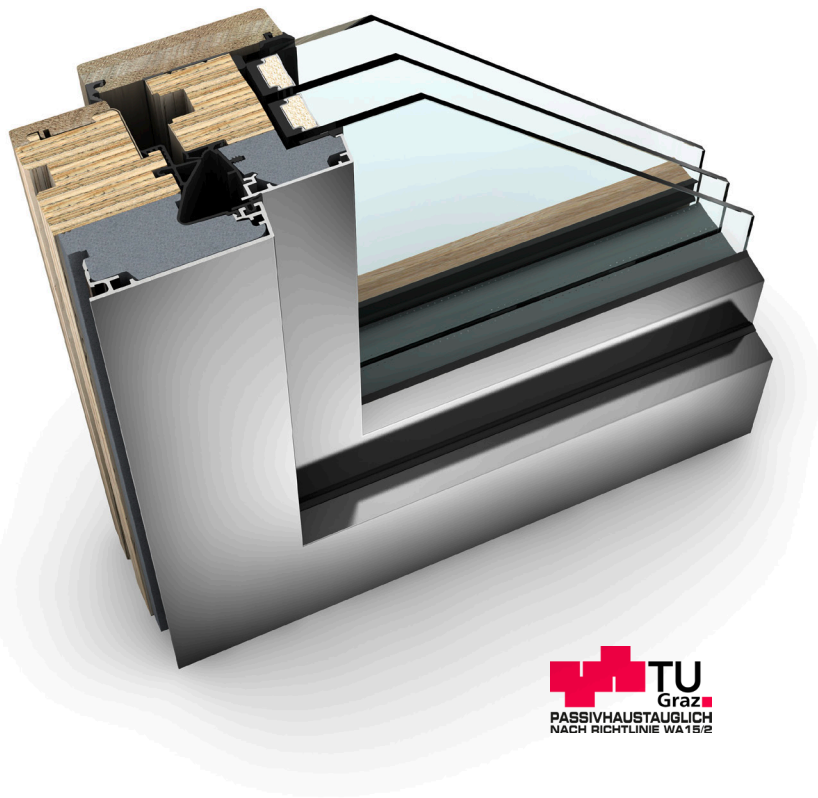







HF 410 TIMBER/ALUMINIUM WINDOW



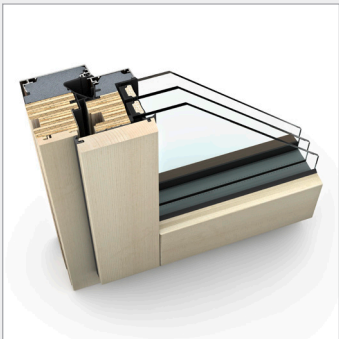
PROPERTIES

	Thermal insulation	U_w as low as 0.64 W/(m ² K)
	Sound reduction	up to 45 dB
	Security	RC1N, RC2
	Locking	concealed
	Construction depth	85 mm

I-tec Glazing
I-tec Core

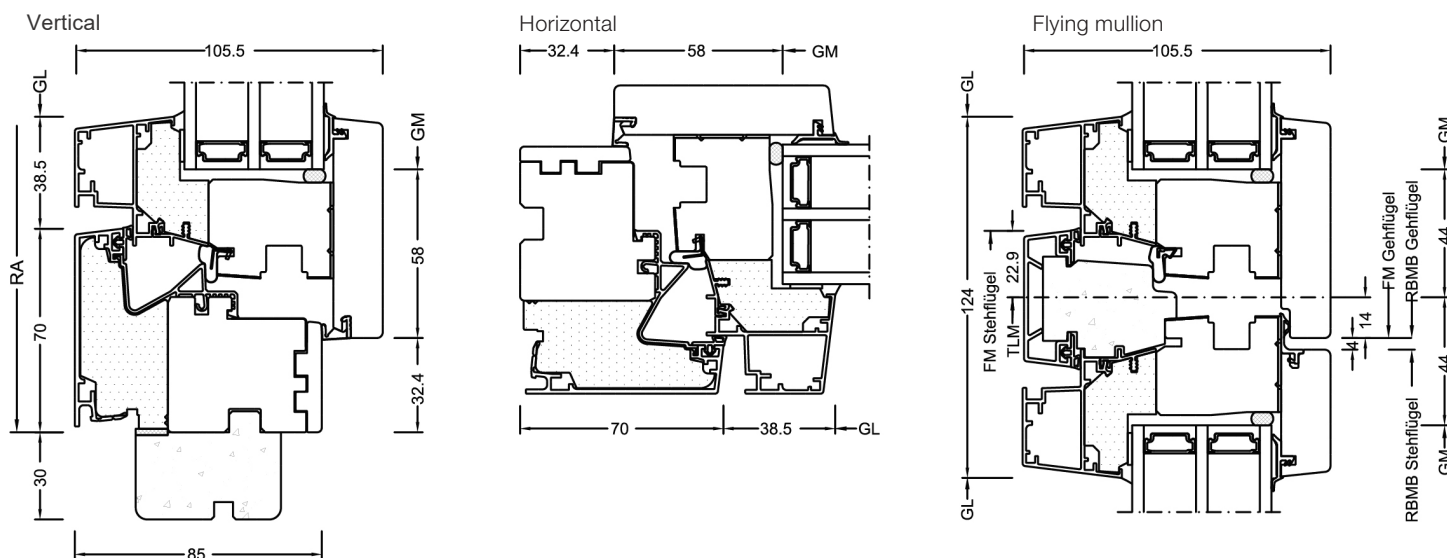


Experience HF 410 interactively now with Augmented Reality



HF 410
Uniform materials and colours of interior design emphasise your minimalist style of living and bring extraordinary individual pieces to the fore. HF 410 matches your interior design perfectly. Different colours and types of timber offer you countless possibilities for your individual interior colour scheme. Grey Oak as interior colour corresponds to the modern living style with clear forms, simple materials and discreet colours. Made to measure, openable and fixed glazed windows can be combined to form large areas.

Sections



Values

Glass buildup	GC	Spacer	Coating	U _g	g	U _f	Psi	U _w	Thermal certif.	R _w	C	C _{tr}	Sound certif.
4b/18Ar/4/18Ar/b4	3N2	Iso	ECLAZ	0.5	60%	0.86	0.033	0.70	YES	35	-2	-6	YES
		Alu	ECLAZ	0.5	60%	0.86	0.079	0.80	YES				
6b/18Ar/4/16Ar/b4	33U	Iso	ECLAZ	0.6	59%	0.86	0.033	0.78*	YES	39	-2	-6	YES
		Alu	ECLAZ	0.6	59%	0.86	0.079	0.89*	YES				
44b.2(VSG-S)/ 15Ar/4/12Ar/ b44.2(VSG-S)	3FH	Iso	ECLAZ	0.7	55%	0.86	0.033	0.88*	YES	45	-2	-6	YES
		Alu	ECLAZ	0.7	55%	0.86	0.079	0.99*	YES				
4b/16Ar/4/15Ar/b44.2(VSG-S)	34N	Iso	ECLAZ	0.6	60%	0.86	0.033	0.78*	YES	42	-3	-7	YES
		Alu	ECLAZ	0.6	60%	0.86	0.079	0.89*	YES				

Values for home pure with test certificate

ECLAZ®

Daylight is crucial for our human organism, our wellbeing and our health. Therefore, Internorm windows are equipped with premium glass coating ECLAZ® as standard. The blue components of the light spectrum are transported through the glass more and ensure up to 10 % more daylight. Compared to conventional market glazing, ECLAZ® is offering:

More aesthetics – colour-neutral outside view, a combination of function and aesthetics

More light – up to 10% more daylight – better for health and wellbeing – a significant advantage especially in the dark winter months*

Visual comfort – for a brilliant view to the outside

Room comfort – makes living areas even lighter and friendlier

Energy efficiency – excellent insulation of interior thus reducing heating costs - increased energy efficiency in building - up to 11 % less CO₂ emissions

* In direct comparison to same glass buildups.